

**ina**<sup>®</sup>  
sanitaryware



PT. INAX INTERNATIONAL is the leading Indonesian-based  
ceramics sanitary ware manufacturer founded in 1978.

As a trusted and primary choice for ceramics sanitary products,  
INA boasts an international management team with over 40 years  
of collective experience.

#### OFFICE

Semarang Plaza 2nd Floor  
Block B  
Jl. H. Agus Salim No, 7  
Semarang 50137  
Indonesia

TEL. +62-24-3518391

## ABOUT PT. INAX INTERNATIONAL

Combining top-notch designs, sophisticated manufacturing processes, and reliable quality control, we have been bringing a wide variety of high-quality and on-trend products to our customers for four decades, ranging from wash basins to toilets to sanitary fittings. Our cutting-edge technology ensures that all of our products are manufactured efficiently while adhering to international industry standards. Celebrating our 40th anniversary in 2018, we strive to continue improving and expanding our capabilities and services in order to deliver only the best to you.

The headquarters of PT. INAX INTERNATIONAL are located in the heart of Semarang, Central Java, Indonesia. The strategic geographical location of the city, along with our factory's proximity with international airport and seaport, allows us to ship products to other cities and countries quickly and efficiently.

---

## TECHNOLOGY

As an integrated manufacturer, all of our ceramics sanitary products are fired using tunnel kilns to ensure efficiency as well as stability in both quality and size. This puts us in the enviable position of guaranteeing a short lead time in mass production. Furthermore, our technology is constantly being upgraded to ensure that we maintain a leading edge performance. As part of our commitment to you, just before the products are packaged, final quality inspections are conducted at the end of every step in the process. This way, we can guarantee that we deliver only quality products to all of our customers.

---

## PRODUCTS

Our vast range of ceramics sanitary products boasts cutting-edge and on-trend styles designed for an extensive market. From wash basins to sanitary fittings, our international design team collaborates to create designs that are highly functional, easy to clean, and most importantly, pleasant to the eyes. Our products come in a wide variety of measurements and versions: suspended, supported, semi built-in, and free standing, all of which are in line with the current market demands.





WHAT'S THE DIFFERENCE?

## SINGLE FLUSH DOUBLE FLUSH

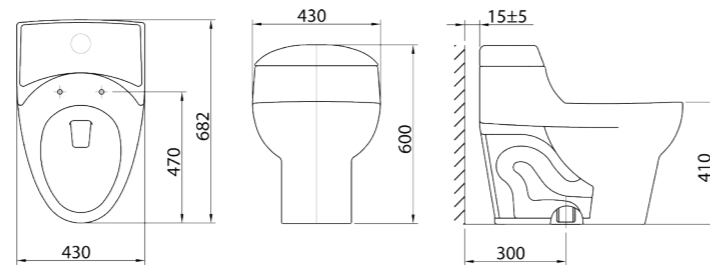
Single-flush toilets are the most common type of toilet found in older homes and buildings. They have only one flush mechanism—meaning that all types of waste are flushed with the same amount of water, sometimes as much as five gallons.

Dual-flush toilets, on the other hand, have two flush mechanisms—normally two buttons located on the top of the tank instead of a lever. One button engages a flush using less water (about 0.8 gallons) that's meant only for liquid waste, while the other button engages a flush meant for solid waste (about 1.6 gallons).

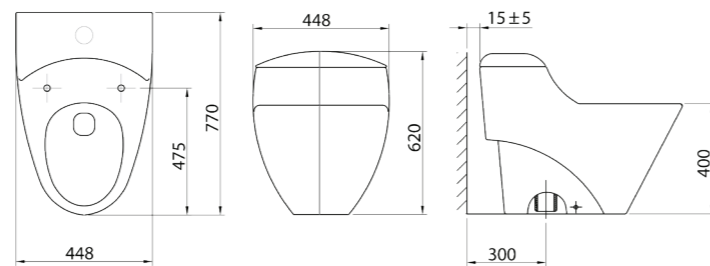




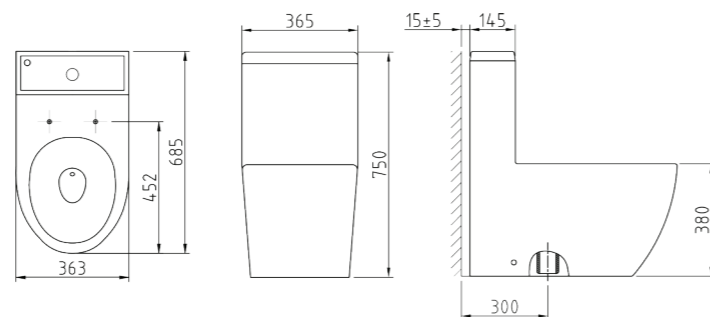
**NC-009**  
siphonic system



**NC-898**  
siphonic system

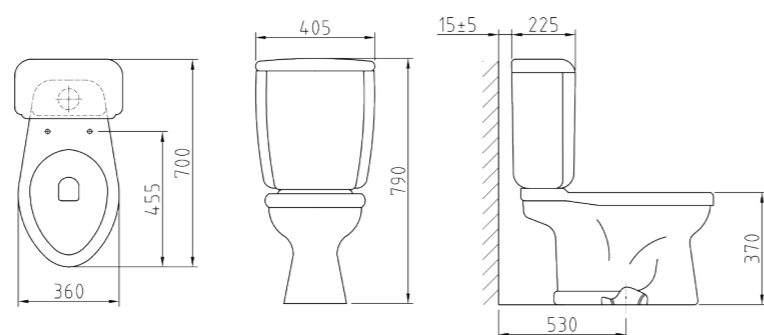


**NC-899**  
siphonic system

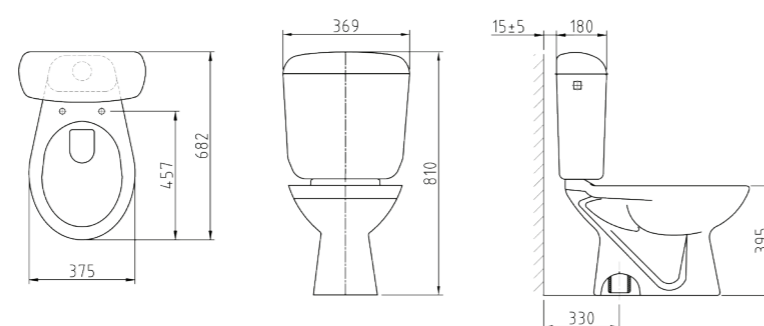




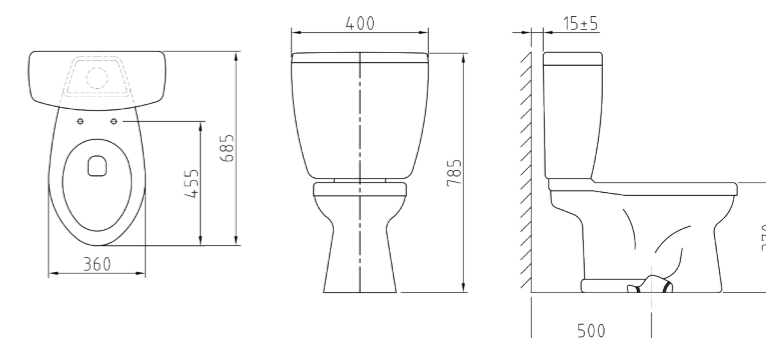
**C-12 / T-12**  
wash down system



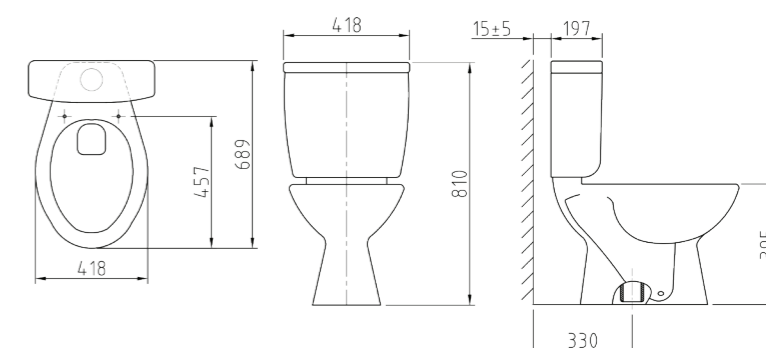
**C-19 / T-108**  
wash down system



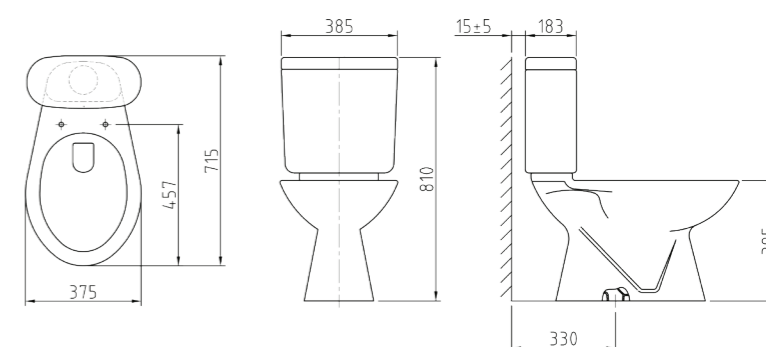
**C-20 / T-20**  
wash down system



**C-21 / T-21**  
wash down system

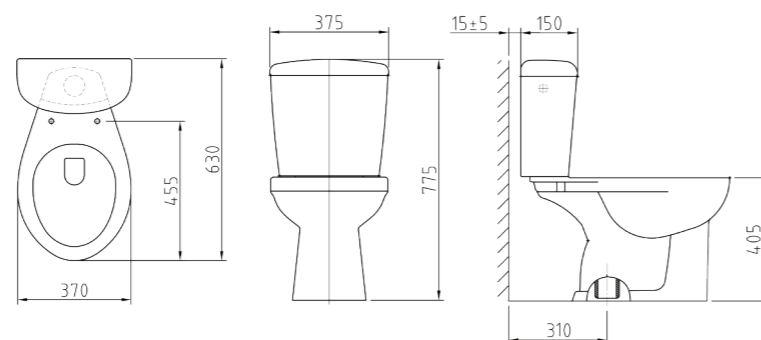


**C-22 / T-22**  
wash down system

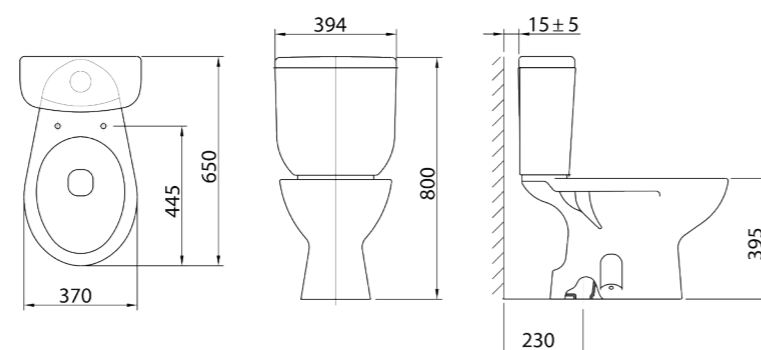


**C-30 / T-33**

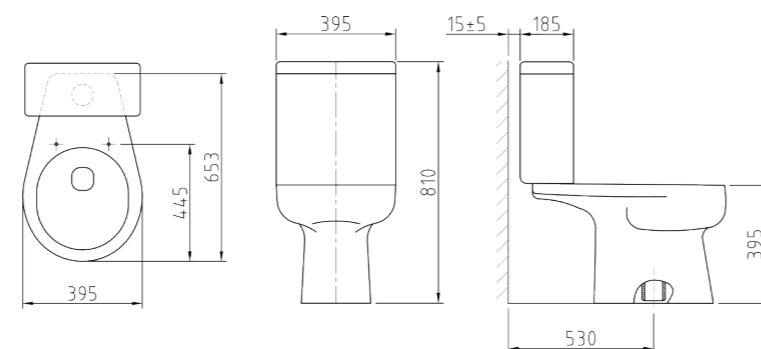
wash down system

**C-65 / T-950N**

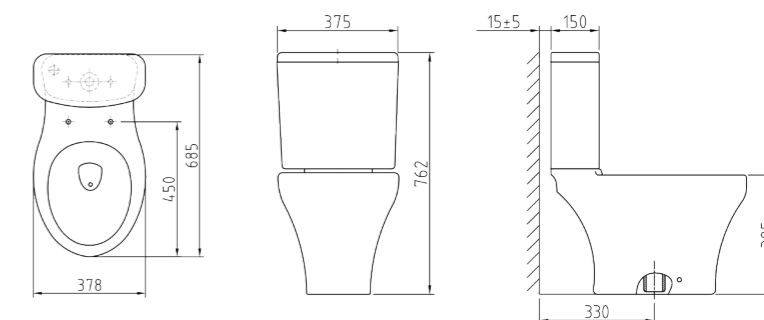
wash down system

**C-68 / T-68**

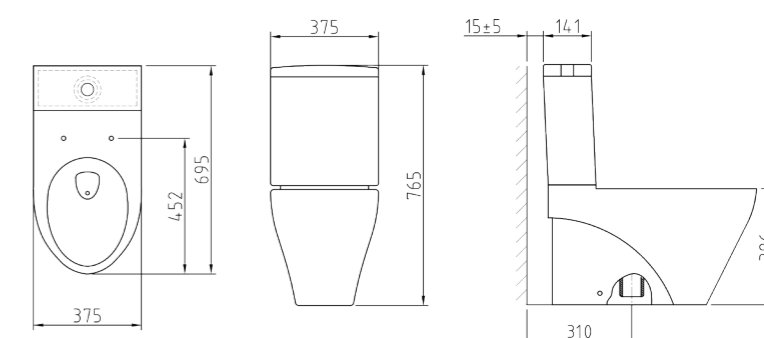
wash down system

**C-97 / T-97**

siphon jet system

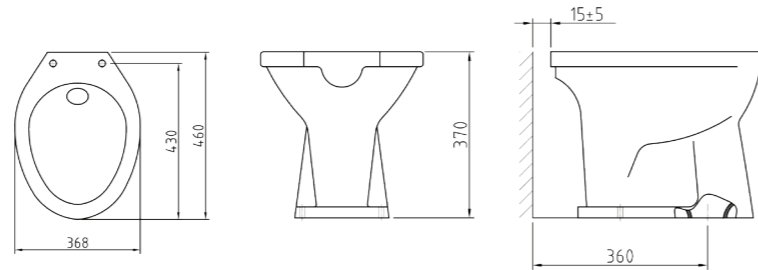
**C-98 / T-98**

siphon jet system

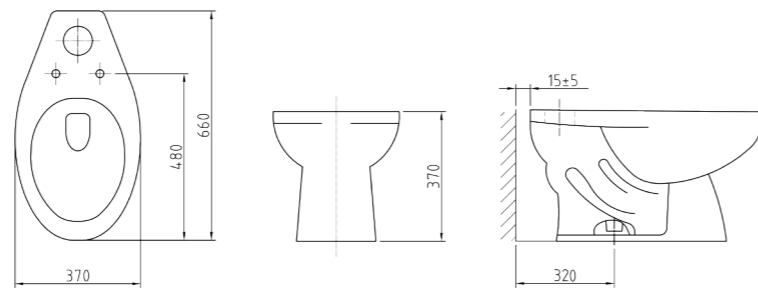




**C-16**  
wash down system

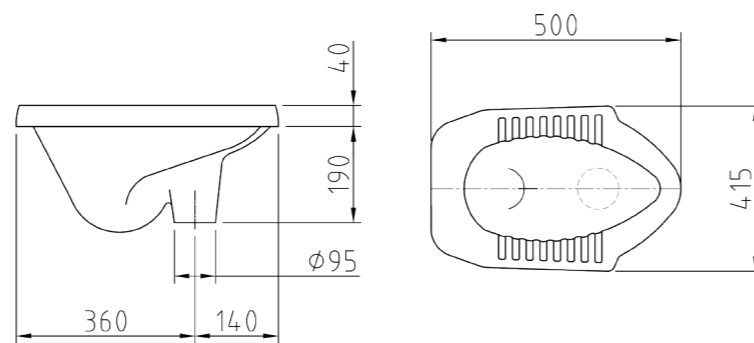


**C-55**  
siphon jet system

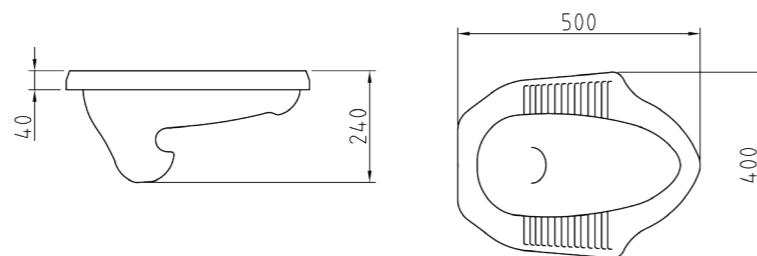




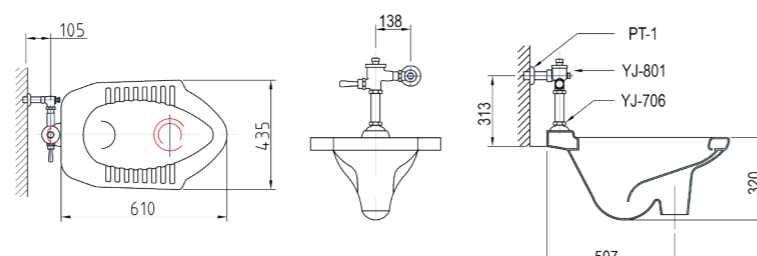
**C1N**  
squatting toilet



**C2**  
squatting toilet

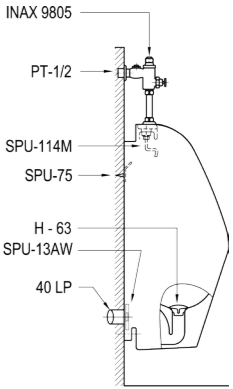
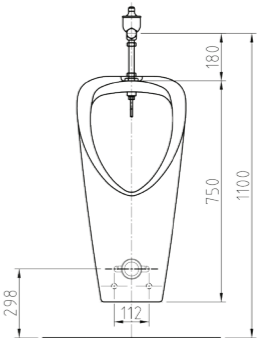
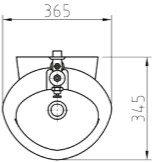


**C3**  
squatting toilet



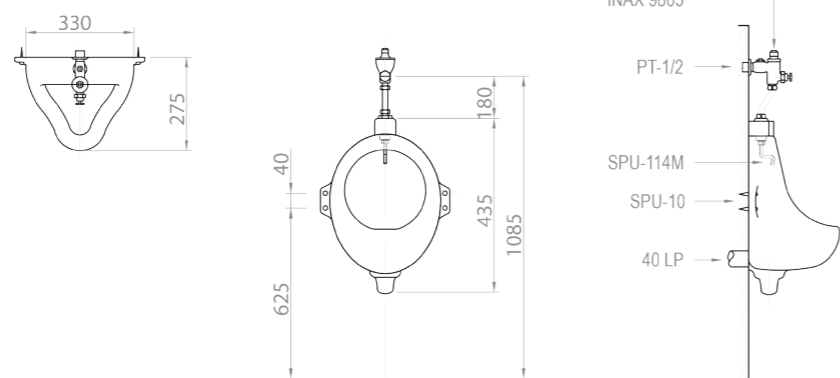


U75N  
urinal

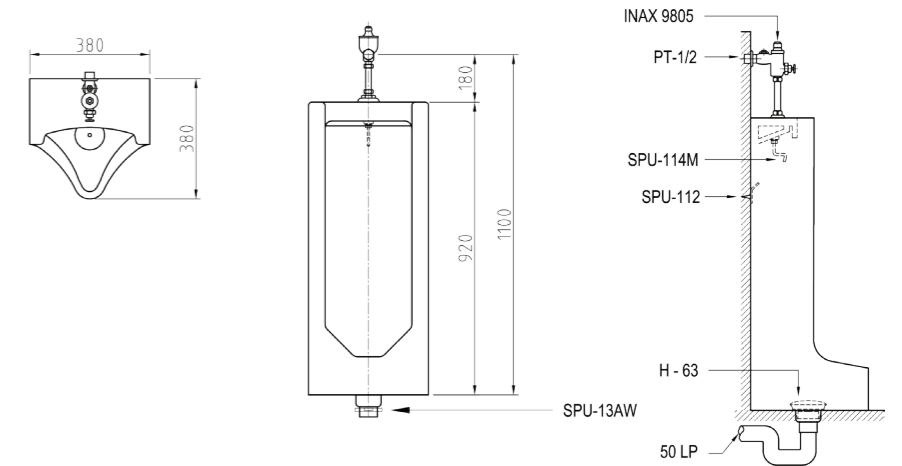




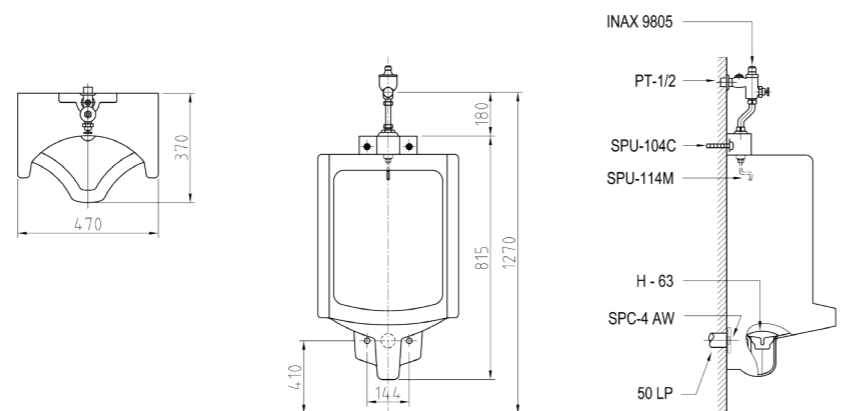
**U4U**  
urinal



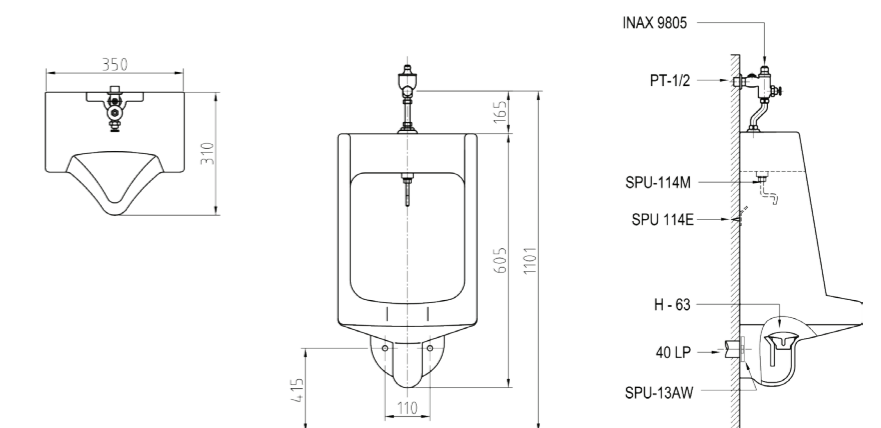
**U112**  
urinal



**U104**  
urinal

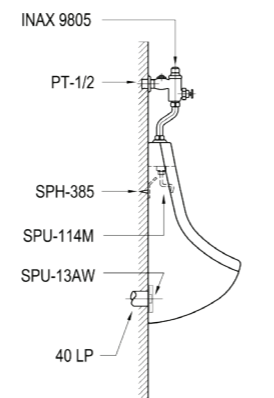
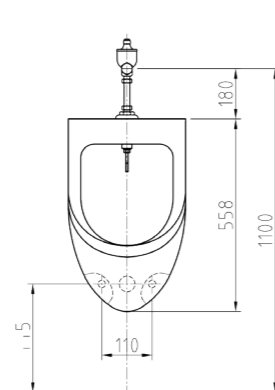
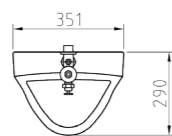


**U114N**  
urinal

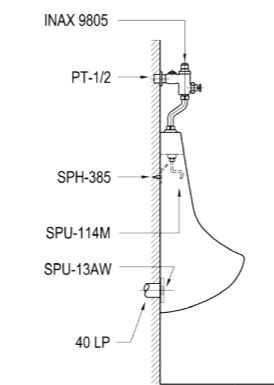
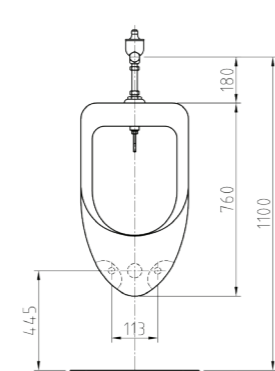
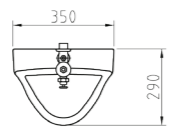




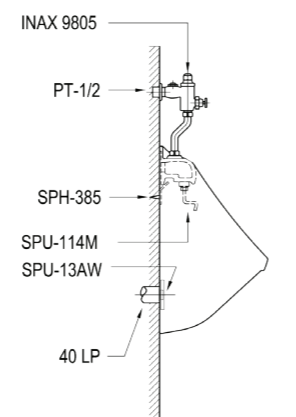
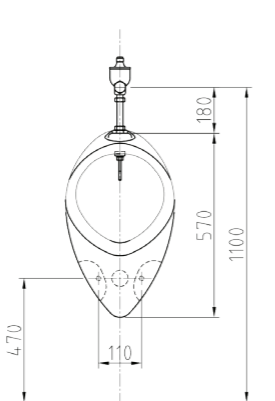
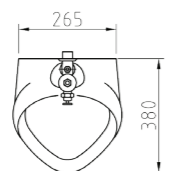
**U115N**  
urinal



**U118N**  
urinal



**U385N**  
urinal





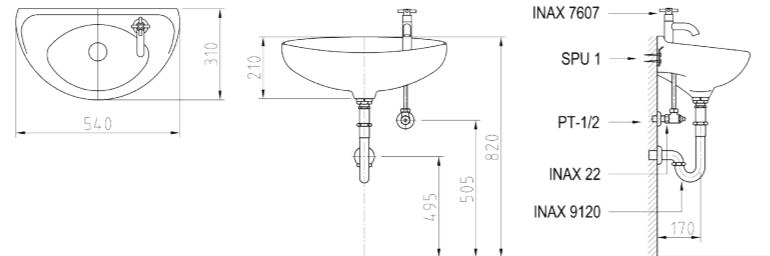
AX 100  
urinal (divider)

---

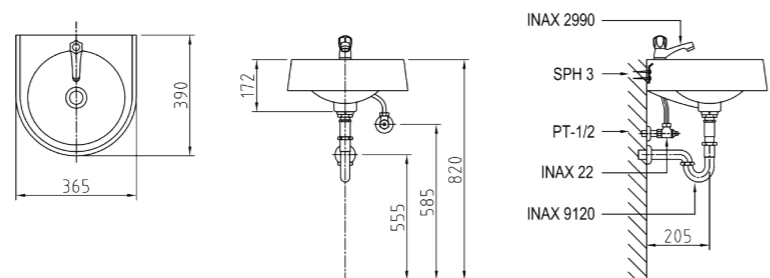




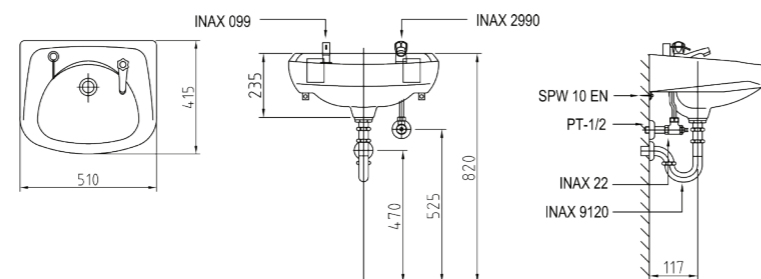
**L10AG**  
wallhung washbasin



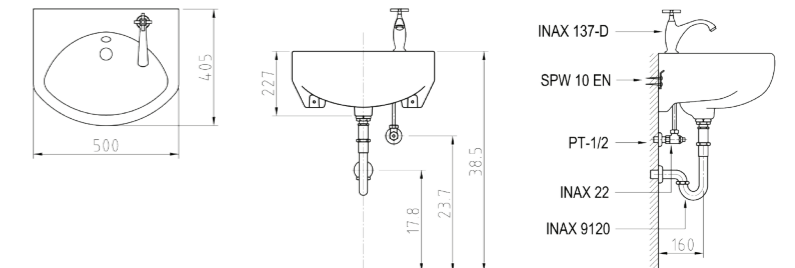
**L39G**  
wallhung washbasin



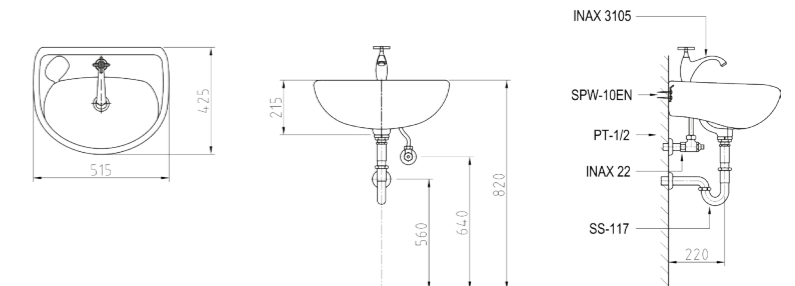
**L330**  
wallhung washbasin



**LX380N**  
wallhung washbasin

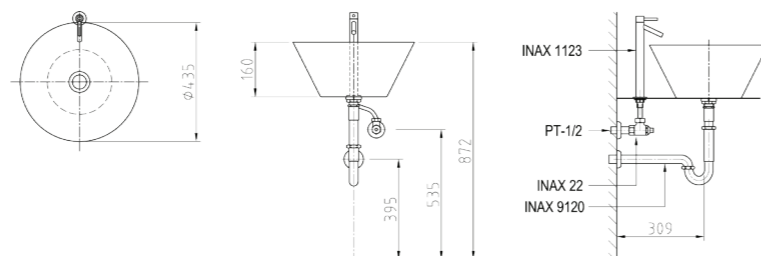


**LX390N**  
wallhung washbasin

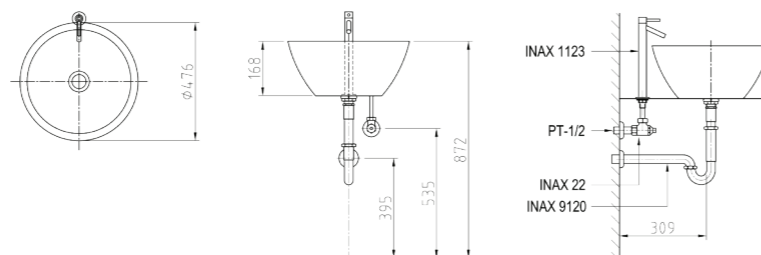




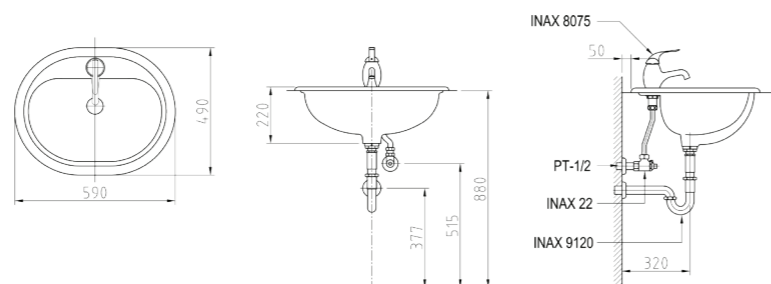
**L470**  
console washbasin



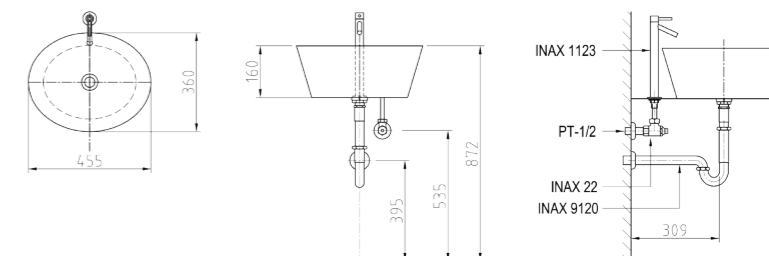
**L480**  
console washbasin



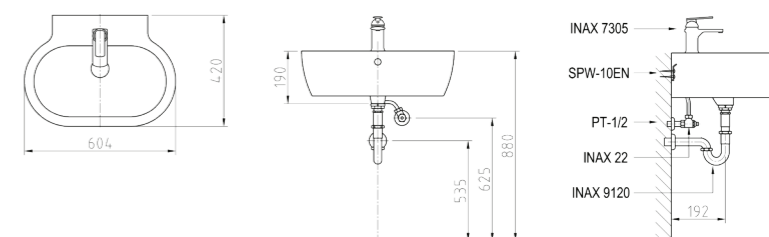
**L560**  
self rimming washbasin



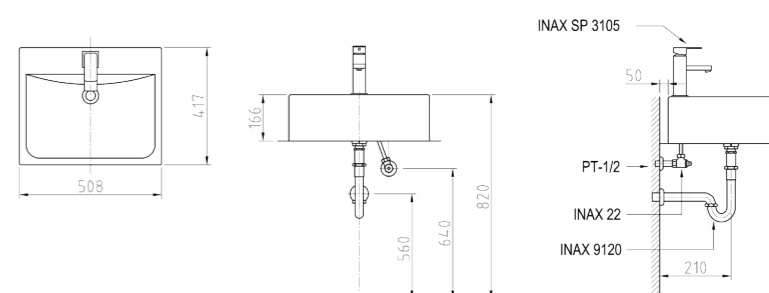
**L570**  
console washbasin



**L600**  
console washbasin

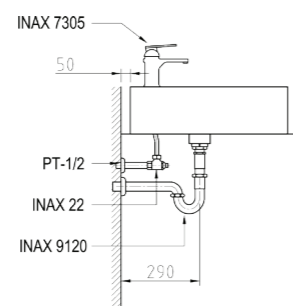
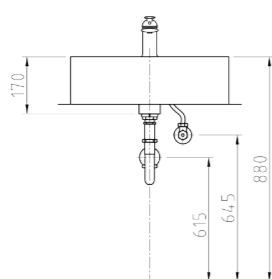
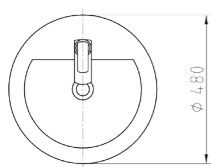


**L700FC**  
console washbasin



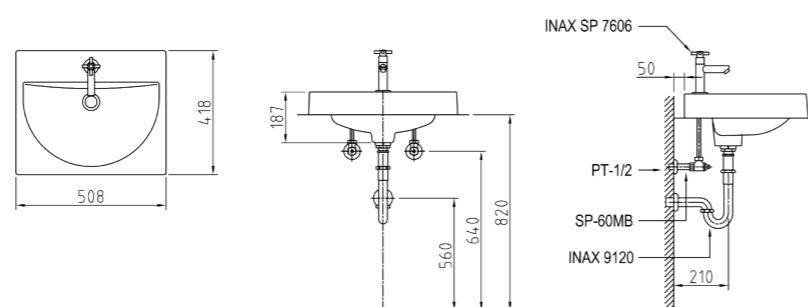


**L580**  
console washbasin

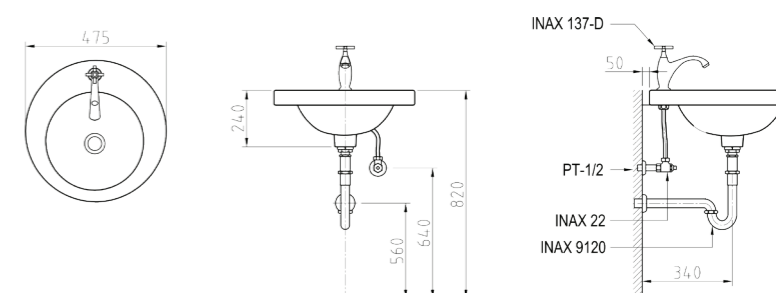




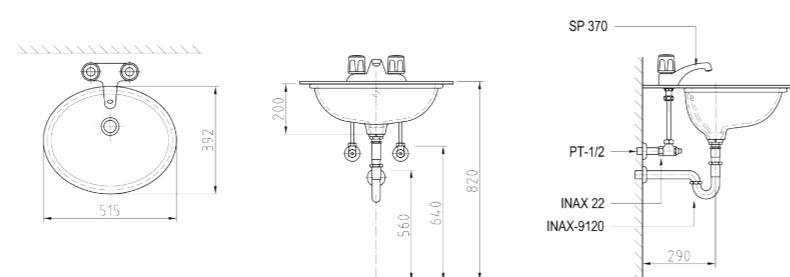
L800  
console washbasin



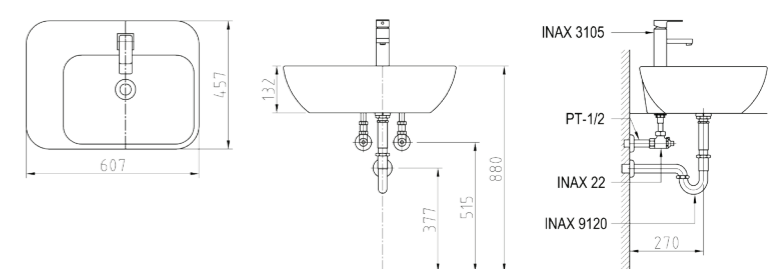
L2395FC  
self rimming washbasin



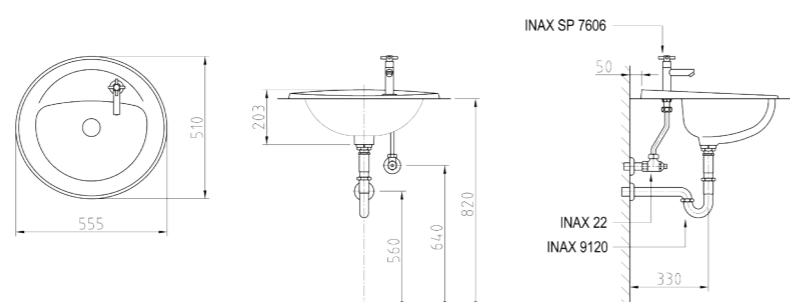
L2393N  
under counter washbasin



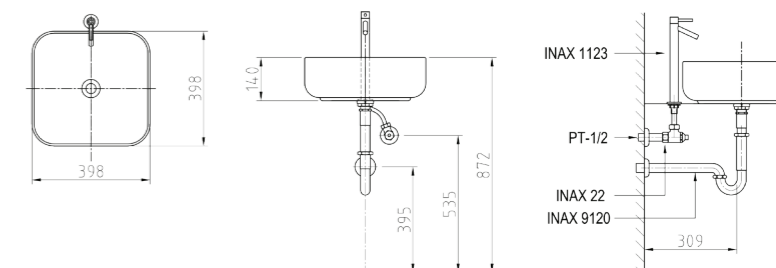
LX659  
console washbasin



L2394G  
self rimming washbasin

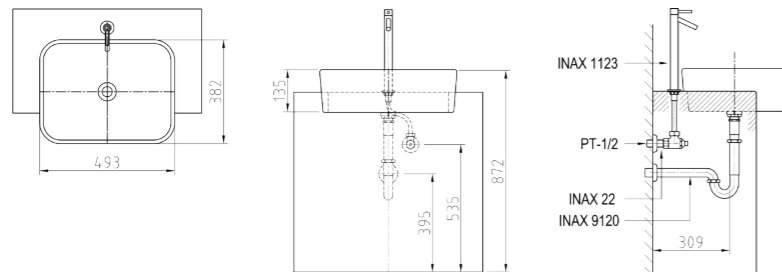


LX669  
console washbasin

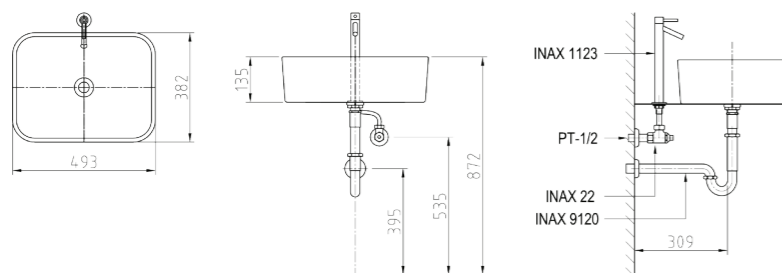




**LX679**  
semi-recessed washbasin

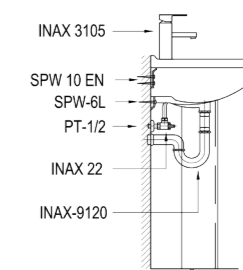
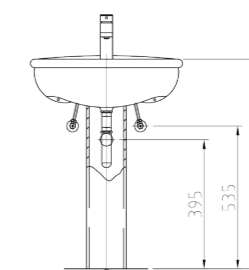
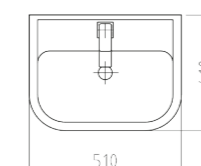


**LX689**  
console washbasin



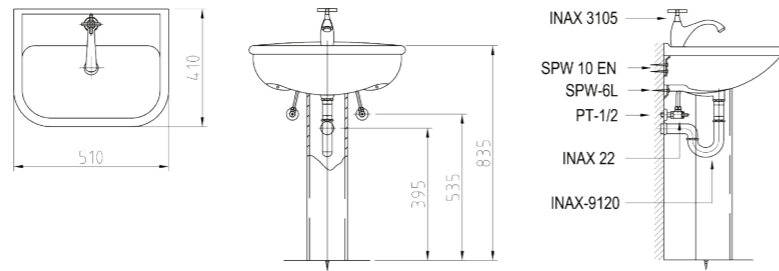


EL050FC/ED070  
pedestal lavatory

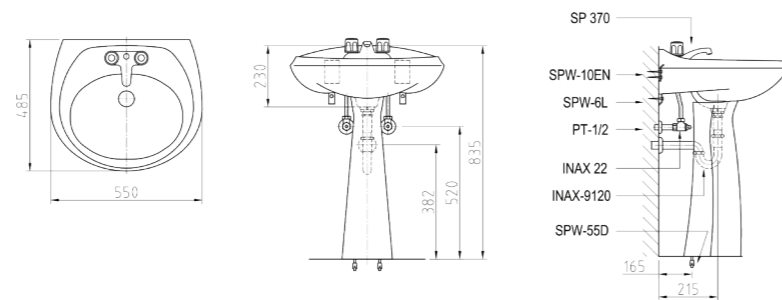




**LX398/ED070**  
pedestal lavatory



**L286ED/L286D**  
pedestal lavatory



**ina**<sup>®</sup>  
sanitaryware

OFFICE

Semarang Plaza 2nd Floor  
Block B  
Jl. H. Agus Salim No, 7  
Semarang 50137  
Indonesia

Phone : +62-24-3518391

Website : [ina-sanitary.com](http://ina-sanitary.com)

